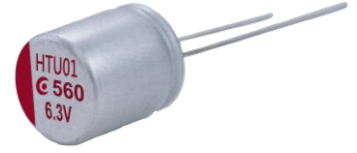


ARHT Series High Endurance & Voltage

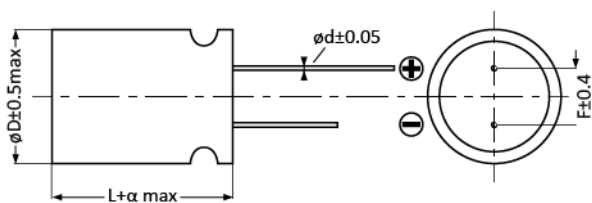
- Rated Voltage: 25~63Vdc
- Endurance 2000hrs at 125°C
- Suitable for AC-DC、DC-DC converters, voltage regulators and decoupling applications
- RoHS Compliant



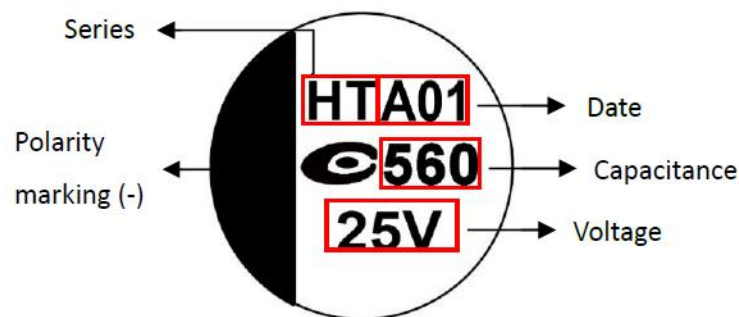
Specification

Category Temperature Range	-55 to 125°C	Rated Voltage Range	25 to 63Vdc
Rated Capacitance Range	82 to 680 (μF)	Capacitance Tolerance	±20% (M)
Surge Voltage	Rated voltage x1.15(at 125°C)	Dissipation Factor	0.12max.(at 20°C 120Hz)
Leakage Current	Shall not exceed values shown in standard ratings.		
Endurance	125°C, 2000hrs, rated voltage applied		
	Appearance	No significant damage	
	Capacitance Change	≤ ±20% of the initial value	
	DF(tanδ)	≤ 200% of the initial specified value	
	ESR	≤ 200% of the initial specified value	
	Leakage current	≤ The initial specified value	
Damp Heat (Steady State)	60°C, 90 to 95% RH, 1000hrs, no voltage applied		
	Appearance	No significant damage	
	Capacitance Change	≤ ±20% of the initial value	
	DF(tanδ)	≤ 200% of the initial specified value	
	ESR	≤ 200% of the initial specified value	
	Leakage current	≤ The initial specified value	
Surge Voltage	1,000 cycles and each one includes charge with surge voltage specified at 125°C for 0.5min through a protective resistor (R=1kΩ) and discharge for 5.5min.		
	Appearance	No significant damage	
	Capacitance Change	≤ ±20% of the initial value	
	DF(tanδ)	≤ 200% of the initial specified value	
	ESR	≤ 200% of the initial specified value	
	Leakage current	≤ The initial specified value	

Dimensions and Marking



SIZE Code	∅D±0.5 max	L	α	∅d±0.05	F±0.4
08X8	8.0	8.0	-0.5~1.0	0.6	3.5
08A2	8.0	12.0	-0.5~1.0	0.6	3.5
10A2	10.0	12.0	-0.5~1.0	0.6	5.0



ARHT Series **High Endurance & Voltage**

WV/Vdc (SV)	Cap (μ F)	Size Code	Leakage Current (μ A)	ESR ($m\Omega_{max}/20^{\circ}C$, 100k to300kHz)	Rated Ripple Current (mA _{rms} /100kHz)		Part No.
					105°C	125°C	
25 (28.8)	100	08X8	500	24	2,900	1,160	250ARHT101M08X8
	220	08A2	1,100	18	4,250	1,700	250ARHT221M08A2
	330	08A2	1,650	18	4,250	1,700	250ARHT331M08A2
	470	08A2	2,350	18	4,250	1,700	250ARHT471M08A2
	560	10A2	2,800	16	4,700	1,880	250ARHT561M10A2
	680	10A2	3,400	16	4,700	1,880	250ARHT681M10A2
35 (40.3)	100	08A2	700	26	2,950	1,180	350ARHT101M08A2
	150	08A2	1,050	26	2,950	1,180	350ARHT151M08A2
	180	08A2	1,260	26	2,950	1,180	350ARHT181M08A2
	220	08A2	1,540	26	2,950	1,180	350ARHT221M08A2
	330	10A2	2,310	24	3,400	1,360	350ARHT331M10A2
	390	10A2	2,730	24	3,400	1,360	350ARHT391M10A2
50 (57.5)	120	08A2	1,200	32	2,250	900	500ARHT121M08A2
	180	10A2	1,800	28	2,620	1,048	500ARHT181M10A2
	220	10A2	2,200	28	2,620	1,048	500ARHT221M10A2
63 (72.5)	100	10A2	1,260	32	2,550	1,020	630ARHT101M10A2
	150	10A2	1,890	28	2,550	1,020	630ARHT151M10A2
	180	10A2	2,268	28	2,550	1,020	630ARHT181M10A2