

AREC Series High Current

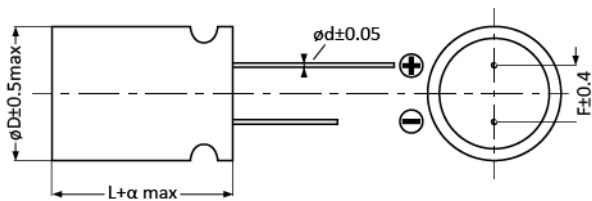
- Super low ESR, High ripple current capability
- Rated voltage: 2.5~16Vdc
- Endurance 2000hrs at 105°C
- Suitable for DC-DC converters, voltage regulators and decoupling applications
- RoHS Compliant



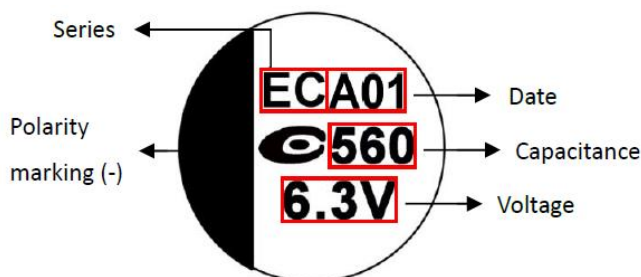
Specification

Category Temperature Range	-55 to 105°C	Rated Voltage Range	2.5 to 16Vdc
Rated Capacitance Range	270 to 2200 (μF)	Capacitance Tolerance	±20% (M)
Surge Voltage	Rated voltage X 1.15 (at 105°C)	Dissipation Factor	0.1 max. (at 20°C 120Hz)
Leakage Current	Shall not exceed values shown in standard ratings. (at 20°C after 2 mins.)		
Endurance	105°C, 2000hrs, rated voltage applied		
	Appearance	No significant damage	
	Capacitance Change	≤ ±20% of the initial value	
	DF(tanδ)	≤ 150% of the initial specified value	
	ESR	≤ 150% of the initial specified value	
	Leakage current	≤ The initial specified value	
Damp Heat (Steady State)	60°C, 90 to 95% RH, 1000hrs, no voltage applied		
	Appearance	No significant damage	
	Capacitance Change	≤ ±20% of the initial value	
	DF(tanδ)	≤ 150% of the initial specified value	
	ESR	≤ 150% of the initial specified value	
	Leakage current	≤ The initial specified value	
Surge Voltage	1,000 cycles and each one includes charge with surge voltage specified at 105°C for 0.5min through a protective resistor (R=1kΩ) and discharge for 5.5min.		
	Appearance	No significant damage	
	Capacitance Change	≤ ±20% of the initial value	
	DF(tanδ)	≤ 150% of the initial specified value	
	ESR	≤ 150% of the initial specified value	
	Leakage current	≤ The initial specified value	

Dimensions and Marking



SIZE Code	∅D ± 0.5 max	L	α	∅d ± 0.05	F ± 0.4
06X8	6.3	8.0	-0.5~1.0	0.6	2.5
08X8	8.0	8.0	-0.5~1.0	0.6	3.5
08A2	8.0	12.0	-0.5~1.0	0.6	3.5
10A2	10.0	12.0	-0.5~1.0	0.6	5.0



AREC Series **High Current**

Standard Ratings

WV/Vdc (SV)	Cap (μF)	Size Code	Leakage Current (μA)	ESR (mΩmax/ 20°C, 100k to 300kHz)	Rated Ripple Current (mArms/ 105°C/100kHz)	Part No.
2.5 (2.9)	560	06X8	500	7	5,000	2R5AREC561M06X8
	560	08X8	500	7	6,100	2R5AREC561M08X8
	820	06X8	500	7	5,000	2R5AREC821M06X8
	820	08X8	500	7	6,100	2R5AREC821M08X8
	1,000	08X8	500	7	6,100	2R5AREC102M08X8
	1,200	08X8	600	7	6,100	2R5AREC122M08X8
	1,500	08A2	750	7	6,100	2R5AREC152M08A2
	1,500	10A2	750	7	6,640	2R5AREC152M10A2
	2,200	10A2	1,100	7	6,640	2R5AREC222M10A2
4 (4.6)	560	08X8	500	7	6,100	4R0AREC561M08X8
	1,200	08X8	960	7	6,100	4R0AREC122M08X8
6.3 (7.2)	470	06X8	592	8	4,700	6R3AREC471M06X8
	470	08X8	592	8	5,700	6R3AREC471M08X8
	560	06X8	705	8	4,700	6R3AREC561M06X8
	560	08X8	705	8	5,700	6R3AREC561M08X8
	820	06X8	1,033	8	4,700	6R3AREC821M06X8
	820	08X8	1,033	8	5,700	6R3AREC821M08X8
	1,000	10A2	1,260	7	6,640	6R3AREC102M10A2
	1,500	10A2	1,890	7	6,640	6R3AREC152M10A2
16 (18.4)	270	08X8	864	10	5,000	160AREC271M08X8
	270	08A2	864	10	5,230	160AREC271M08A2
	330	08X8	1,056	10	5,000	160AREC331M08X8
	470	08A2	1,505	10	5,230	160AREC471M08A2
	680	10A2	2,176	10	6,100	160AREC681M10A2
	820	10A2	2,624	10	6,100	160AREC821M10A2